

BOQ FOR THE PROPOSED WORKS OF INTERIOR FURNISHING OF UCO BANK GRAM PIPLIYAHANA, TILAK NAGAR BRANCH ZONAL OFFICE AT INDORE(M.P.)					
	BRANCHDETAIL: GRAMPIPLIYAHANA, TILAKNAGAR				
PART-I:INTERIOR FURNISHING					
S.N.	Description of Item	Unit	Quantity	Rate	EST Amount
A	Gypsum BoardFalseCeiling				
1	ProvidingandfixingandfinishingGypsumBoardFalseCeilingas perdrawingmadefrom 60mmx36mm G.I.'C'mainsupportssuspendedfrom theceilingbymeansof25mmx18mm G.I.suspendersfittedtotheceilingabovewith anchorfastenersandrowlplugsin concreteceilingsandothersuitableapprovedmeanson allothertype ofceilingsasrequiredandasperdesign, havingpattas /concealedcovesasindicatedindrawings.Fixing 11-12.5mmthickgypsum boardon GIchannelsusinggoodqualityself-tappingscrews,finishingandjointingt看twoboardswithadhesiveandjointingta pesfinishedcompleteinlinesandlevelincludingprovidingcoves, cut-outsforlightfittingsandextraframeworkasnecessaryforACgrillsand/oranyo thercutoutsetc.completein allrespects.Quotedratetoinclude cost ofmakingopeningforlight fittings,grills,diffusers, covesforfittingofdiffusedlightsetc.asrequiredandmaking goodthesame. Cost ofadditional framerequiredand/orasdirectedshall alsobeincludedintherate). It maybenotedthat theverticalsurfaceshall alsobemeasuredforpaymentsandthequotedratesshouldtakein toaccountthisarea.Paintingshall bepaidseparatelyundertherelevant item. <b>NOTE:</b> It shouldbenotedthattheexistingceilingheightisapprox.2.74m TO3.35Meterfrom floor.Thecontractorshouldstudythesiteconditions beforequotingtherates.Noextra costingshall be allowedoverthemeasuredfalseceilingforscaffoldingetc.	Sqm	25		
2	ArmstrongFalseCeilings  Providing&fixingofArmstrongMineralFibreAcousticalSuspendedCeilingSy stem with <b>silhouette ceilinggrid</b> (Tegular) GRIDBLACKCOLOUR. ThetilesshouldhaveHumidityResistance(RH)of99%, NRC0.5, LightReflectance≥84%, ThermalConductivityk=0.052- 0.057w/mK,ColourWhite, FirePerformance UK Class0/Class1(BS476pt - 6&7) inmodulesizeof600x600x16mmwithBioBlockcoating on theface ofthetile, suitableforGreen Buildingapplication ,withRecycledcontentof35- 38%.ThetileshallbelaidonArmstrongPrelude32with 24mm wideT - sectionflangescolourwhitehavingrotarystitchingonallTsections.i.e.theMai nRunner, 1200mm & 600mm Cross Teeswith a webheight of32mmand 27mm ,25mm respectively.Thecostshallincludeall fittingsandmaterials, scaffoldings,walkwaysetc. completeincludingproperinstallation andprovisioningetc.NOTE: It shouldbe notedthattheexistingceilingheightis2.74mTO3.35Meterfrom floorapprox. butpartition heightshall be measureduptovisiblefalseceilingheightandrequiredstiffening,support orfalseceilingmembers shall beprovidedasandwhererequired.Thecontractorshouldstudythesiteconditi ons beforequotingtherates. Noextracostingshall be allowedoverthemeasuredfalseceilingforscaffoldingetc.oranyothersiterela tedaccount.	Sqm	85		
3	Providingandfixingcoves forlightingin anyshape	RMt.	50		

PART-I:INTERIORFURNISHING					
S.N.	Description ofItem	Unit	Quanti	Rate	EST Amount
4	Lowlevelpartition forcubicals				
	<p>Providingandfixinglowheightpartitionupto1200MMheight madeout of50mm*50mm 18mm Gaugealuminumframesat 60CM C/Cvertically&amp;horizontallywith 8mmthickBWRGradeplywoodon bothsidesupto900MM'heightandaboveportionwith 10mm toughenedglassFinishedwith1.00thicklaminatEOFapprovedshadeandde sign.</p> <p>Teakwoodlipingetcshall beprovidedwhererequiredordirectedandshall befinishedwith 1mm thicktexturedlaminatEasapprovedandtheratesshall beincludingprovision foritemslike softboard/whiteboard, electricalswitchboards, telephoneandelectricalwiringetcasandwhererequired(but excludingthecostfortheitems).</p> <p>PlywoodMake: Century/ Green as perbanknormsMica: Formica, Sunmica , centuryas perbanknorms</p>	Sqmt	12.0		
5	SEMI GLAZED PARTITION WITH DOOR, ( Manager, CASH Cabin )				
	<p>Providing&amp;fixing75mm thickpartlyglazedpartitionwith10mmthickclearfloatglass formadeup of18gauge50x50mm Aluminumsection frameworkat 600mm c/cboth ways(orasdirectedbytheArchitect); 12mm BWRgradeplywood&amp; 1mm laminate from bothsides. Partitions shouldbe finishedwithspecifiedfinishasperdesign. Therateincludesproviding 35mm thickflush doorfinishedwith1mm laminateofapprovedmake/shadeon both sideswithnecessarylipingpattipolished. RateincludesallNecessaryhardw are( i.eballbearinghingesofapprovedmake, doorclosure, CylindricalLockwithkey, Doorstopperetc)</p> <p>Exposededgesofthepartitions shouldhave75x12mmmatchingwood Pattiwith groove inbetween. Allprovisionstobemade forallelectrical, networking, telephoneetc. boxes on top partition frameworkatrequiredheights/levelswithnecessaryaddition alsupports&amp;/orscaffoldingasrequired.</p> <p>Therateincludesallnecessaryhardware&amp;cleaningofpartitiontothesatisfac tion oftheArchitect etc. complete. The cash frontpartionhaveingcuttinglassasperdesign , andthereisa provisinoofcut onsidepartition forpassingthediaryas perdesignetc. complete. No extracostingshall beallowedoverthemeasuredfalseceilingforscaffoldingetc. oranyothersiterelatedaccount.</p>	Sqmt	23		
6	STORAGES				
	<p>Providingandfixingfull heightstoragecabinetsasstorageand/orrunners from 450mm depthin 18mmthk.plyconstruction with8mmthk.BwrGRADE .plybackingcompleteasperdetail/specificationswithhorizontal&amp;vertic aldivisionsanddraweras/detail. hollowshutters30mm thickshouldbefixedon SSheavyhingesStorageunitswith good qualityoflockshouldbefixed.</p> <p>TherateshallincludeallTWlippings, lamination ofpartitions, shuttersshallhavewooden liping/andfinishedwith1mmthickTexturedLaminateAsperbanknormso n outerfaceoftheshutterandtheshutteredges, storage top andall exposedfaces ofthestorage . Insideofstorageandshuttershall befinishedwith laminateinmatchingorplain colour, asrequired. Thehandles&amp;hingeswill bess finish orasas/app.&amp;shuttersshall beonebcoselfclosinghingesanddrawersshall be on ebcotelescopicslides. Size2.1x2.7x0.45mt.</p> <p>PlywoodMake: Century/ Green as perbanknormsMica: formica, Sunmica , centuryas perbanknorms</p>	Sqmt	34.00		

PART-I:INTERIORFURNISHING					
S.N.	Description of Item	Unit	Quantity	Rate	EST Amount
7	ProvidingandfixingCabinet forElectricalPanel/DistributionBoard(forDBsoutsideelectrical room only)from400mm to600mm depthin 18mmthk.plyconstruction on open back(without8mmthk.plybacking)fittedon al. framework(costincluded) tocompleteas perdetail/ specifications. hollowshutters30mm thickshouldbefixedon SSheavyhingesStorageunitswith good qualityoflock TherateshallincludeallTWlippings, laminationetc.complete. Theshuttersshallhavewooden lipping/andfinishedwith1mmthickLaminateaspernorms on outerface oftheshutterandtheshutteredges andall exposedfacesofthestorage. In sideandshutterinsidefaceshallbe finishedwitheconomical laminate0.8mmthickinmatchingorplain colour,asrequired. Thehandles&hingeswill bes sfinish orasas/app.&shuttersshall be onebcoselfclosinghinges. PlywoodMake: Century/ Green as perbanknormsMica: formica,Sunmica , centuryas perbanknorms	Sqmt	1.8		
D					
8	ProvidingandfixingExecutives BM Tablehaving a topofapproxsizeLength upto1.8M xWidth0.9mand 750mmheightwith provisionforglasstopofthickness12mmexcludingrunner.Thetableshall bemadein 18mm plyconstructionwithC.P.U. space,singledrawerandcabinet ,foot rest belowasperdesignanddrawing. Thetableedgesshall bedoublethickandallvisiblesurfacesincludingtabletopsfaciaofdrawersan doutside ofshuttersetc. shall befinishedwith1.5mmthickSF/TexturedLaminatesas perbanknorms , thebottom andinside oftableshall befinishedwith 1mm thicklaminate ofapprovedmake,colouranddesign andallhidden areaslikeinsideofdrawers,cabinets, finishedwitheconomical laminate.Thecost shall becompletewithlippings,lock, telescopicdrawerchannels,accessories, hingesetcas perspecifications.Theglassshallhaveplain diamondedgepolish on allfouredges&holeforwiremanagerNOTE: Thecost shall	No.	1		
9	ProvidingandfixingofficerTablehavinga topofapproxsizeLengtharementionbelow. Thetableshall bemadein 18mm plyconstruction withC.P.U.space,singledrawerandcabinet , footrestbelowasperdesign anddrawing. Thetableedgesshall bedoublethickandallvisiblesurfacesincludingtabletopsfacia ofdrawersandoutsideofshuttersetc.shall befinishedwith 1.5mmthickSF/TexturedLaminatesasperbanknorms, thebottomandinside oftableshall befinishedwith1mm thicklaminateofapprovedmake,colouranddesignandallhidden areaslikeinsideofdrawers, cabinets,finishedwitheconomical laminate.Thecost shall becompletewithlippings ,mouldings, telescopicdrawerchannels,accessories,hingesetcasperpecifications. goodqualityoflockon drawersshouldbe providedTheglassshallhavenplaindiamondedge polish on				
	i) 1.5M x0.75M x0.75M ( L xBxh)	Nos.	4		
	ii) 1.37x0.6x0.75M	Nos	1		
	iii)1.05x0.6x0.75	Nos	2		



16	Providing and fixing cash Table having a top of approx size Length are mention below. The table shall be made in 18mm ply construction with C.P.U. space, single drawer and cabinet, foot rest below as per design and drawing. The table edges shall be double thick and all visible surfaces including table top, fascia of drawers and outside of shutter etc. shall be finished with 1.5mm thick SF/Textured Laminates as per bank norms, the bottom and inside of table shall be finished with 1mm thick laminate of approved make, colour and design and all hidden areas like inside of drawers, cabinets, finished with economical laminate. The cost shall be complete with lippings, mouldings, telescopic drawer channels, accessories, hinges etc as per specifications. good quality of flock on drawers should be provided the ht. of cash table on front is 1.2m and on back 0.75m. , the top should have 40mm top with provision of 12mm th. glass etc complete	Nos.	1		
----	---------------------------------------------------------------------------------------------------------------------------------------------------------------------------------------------------------------------------------------------------------------------------------------------------------------------------------------------------------------------------------------------------------------------------------------------------------------------------------------------------------------------------------------------------------------------------------------------------------------------------------------------------------------------------------------------------------------------------------------------------------------------------------------------------------------------------------------------------------------------------------------------------------------------------------------------------------------------------------	------	---	--	--

PART-I: INTERIOR FURNISHING					
S.N.	Description of Item	Unit	Quantity	Rate	EST Amount
17	Providing and applying Putty and Premium Emulsion Paint on Walls, Partition excluding Ceiling etc. (Old or Fresh Work) including surface preparation, cleaning, scraping old paint off, application of primer, upto 3 coats of putty and finishing with up to two more coats of ICIDulux washable emulsion paint or equivalent - roller finish (matt) to all indicated wall surfaces. The paint shall be applied after thorough cleaning of the existing painted/fresh work surfaces so as to achieve a dirt-free, grease-free, plain surface free of residual paints as per manufacturer's specifications, application of primer, required number of coats of putty and application of primer coat after proper levelling of putty and finally to be applied with paint. The paint shall be applied as per the manufacturer's recommendations, evenly to produce uniform well finished surface including final cleaning of the premises to the Bank	Sqmt	30		
18	Providing and applying Economical Water Based Emulsion Paint (with single coat putty) on all ceilings and demarcated wall etc. of record rooms, store rooms, stationer y rooms, locker room etc. and finishing two more coats of ICIDulux emulsion paint or equivalent - roller finish (matt) to all surfaces. The paint shall be applied after thorough cleaning so as to achieve a dirt-free, grease-free, plain surface free of residual paints as per manufacturer's specifications, application of primer, one coat of putty and application of primer coat after proper levelling of putty and finally to be applied with paint . The paint shall	Sqmt	1		
19	Providing & applying Weather Proof Exterior Emulsion Grade Water Based Paint like a pebble finish of approved 2 or more colours and brand in two more coats on all external walls and concrete surfaces making good all visible cracks and defects including scaffolding, brushing and brooming all complete. The paint shall be applied evenly to produce uniform even surface to approved finish including cleaning and preparing the surface, as per manufacturer's specifications	Sqmt	1		

20	Providing and applying two or more coats of synthetic enamel paint to make Asian, or equivalent of approved shade and finish on all surfaces except on inner sides of drawers, storage etc. or in items including the cost of painting synthetic enamel in the rates) complete including putty, scaffolding etc. as per the manufacturer's recommendations and to the satisfaction of the Bank Engineer's/Architect's satisfaction	Sqmt	1		
H					
21	Providing and fixing vertical blinds for windows of Trac /Vista or equivalent of approved shade and medium range fabric (synthetic material) on windows including complete installation of track, <del>blinds and mounting accessories</del>	Sqmt	16.00		
22	Providing and fixing Pin-up boards of 12mm thick pin board covered with plain matt/cotton fabric as per approval, the fabric stuck with rubber based adhesive to the board as instructed. Cost shall include all twillings, base preparation required and joint on fabrics shall not be approved.	Sqmt	3.5		
23	Providing and fixing Mirror of make modiguard/saint gobainet core equivalent of height 900mm complete with flat polished edges, fitted on site on 12mm ply base, base having wooden lipping border and finished with laminate as instructed. The mirror shall be either pasted on the ply with silicon adhesive or fitted with stud-head screws with a gap in between (minimum 6 nos stud-head screws on an average per location) or both as per approval complete to the architect's satisfaction.	Sqmt	1		
24	Dismantling & removing of existing furniture as per instruction given by bank and removing of wooden items & garbage to nearest disposal place approximate 5Km from branch or as suggested by bank etc. complete	job	1		
25	Providing and Applying anti-termite treatment using premise chemical inclusive of chloro 50% cypermethrine 25% and fortex 10gm warranty should be period of 5 years mandatory thereafter certificate of the work should be submitted to the zonal office mandatory.	Sqmt	200		
	<b>PART-I: INTERIOR FURNISHING Total</b>			<b>Rs</b>	
				<b>Say</b>	
<b>IN WORDS (Rs.)</b>					
NOTE: CONTRACTOR SHALL QUOTE RATE EXCLUDING GST WHICH SHALL BE PAID BY THE BANK EXTRA AS PER GOVT. NORMS PREVAILING AT THE TIME OF PAYMENT.					

**PRICE BID (PART-II)-ELECTRICAL**

NAME OF WORK:- Electrification work of Gram Pipliyahana, Tilak Nagar Br. Of Uco Bank, Indore M.P.

Elect					
S.No.	DESCRIPTION OF WORKS	UNIT	QTY	RATE	AMOUNT
A.	POINTS & WIRING				
1	LIGHTS POINTS				
1	Wiring for light point/fan point/wall fan point/exhaust fan/light socket etc. with 1.5sq.mm.PVC insulated 1100V grade copper conductor (FRLS) wires & 1.5sq.mm.copper earth wire in concealed/surface using 16SWGMS/PVC conduits, accessories such as bends, tees, saddles, draw boxes, mounting boxes, inner plates, cover plates, ceiling rose etc. (wherever required) and chromium plates brass screws/rowel plug etc. The circuit wiring starting from DB top point control box/switch box using 2X2.5sq.mm PVC insulated 1100V grade multi stranded copper conductor wire & 2.5sq.mm.PVC insulated earth wire (color code to be used). (Flexible conduit/elbow not allowed). The conduit to be laid in ceiling with proper clamps/wall/floor and filling the chase with cement mortar and finishing the same in original form/wooden partition/above false ceiling with proper clamp etc. all complete.				
	(Wherever required as per standard specifications).				
	i) Each circuit shall have independent earth wire.				
	ii) Each point shall be earthed.				
	iii) Circuit wiring is to be included in point wiring rates.				

i	Primary points controlled by one 6amp. Modular switch.	Nos.	40		
ii	Secondary light points Connected by primary	Nos.	5		
iii	Call bell point with ceiling rose/6amp. 3 pin socket controlled by one 6amp. Push Modular switch. With call bell	Nos.	1		
iv	Wall fan/exhaust fan point with 6amp 3 pin socket controlled by one 6amp. Modular switch. The switch should be at switch board level.	Nos.	1		
v	Ceiling fan point with Step regulator socket switch. The switch should be at switch board level	Nos.	11		
vi	5 pin socket controlled by one 6amp. Modular switch complete on same board	Nos.	5		
vii	inverter point with 1mm wire	Nos.	18		
<b>2</b>	<b>POWER POINTS</b>				
	Same as serial no. 1, but wiring for 16Amp, 6-pin sockets by using 2*4sq. mm. PVC Insulated 1100V grade copper conductor wire with independent 1*4.0sq. mm earth wire from D.B. to first point 1 <sup>st</sup> socket and 1 <sup>st</sup> to 2 <sup>nd</sup> , socket with 2*2.5sq. mm and 1*2.5 earth wire including providing and fixing of 16Amp, 6-pin socket with 16Amp. Switch. (Modular type switch/socket/plate etc. complete assembly) max 2 points				
a)	Primary Point	Nos.	3		
b)	Secondary Point	Nos.	3		
<b>3</b>	<b>AC POINTS FOR INDOOR &amp; OUTDOOR UNITS</b>				
3(a)	Same as serial no. 1, but wiring for A/C socket by using 2*4sq. mm. PVC Insulated 1100V grade copper conductor wire and earthing with 1*4.0sq. mm. PVC Insulated 1100V grade copper conductor wire with modular type 16amp socket & 25amp Modular MCB. complete in all respects to be provided near indoor unit. The point starts from DB to stabilize to the point near the indoor unit including top.	Nos.	2		
<b>4</b>	<b>COMPUTER POINTS</b>				
a	wiring with 2x2.5sq. mm. + 1x2.5sq. mm. PVC Insulated 1100V grade multistranded copper conductor wires in 2mm thick PVC conduit from UPS DB to computer point. Each point to have 3 nos. 6amps. 5pin modular type sockets, one 6amps modular switch with all accessories, inner/outer plates, metal box etc. and to be fixed on wooden partitions/by routing on wall etc. as per requirement at site. The switch should be fixed above the top of counter with indicator and sockets under the counter b) Same as above but looped from the above 1st point to 2nd, point on the adjacent point (Maximum 3 points in a circuit)				
	Primary Points	Nos.	9		
	Secondary Points	Nos.	2		



b	Wiring with 2x2.5sq.mm+1x2.5sq.mm PVC Insulated 1100V grade multi strand dcopper conductor wires in 2mm thick PVC conduit from UPS DB to computer point. Each point to have 1 nos. 16amps 5pin modular type sockets, 1No's 16amps modular switch with all accessories, inner/outer plates, metal box etc and to be fixed on wooden partitions/by routing on wall etc as per requirement at site. The switch should be fixed above the top of counter and sockets under the counter. or as directed by the engineer in charge for the rack supply in PARack, CCTV b) Same as above but looped from the above 1st point to 2nd point (Maximum 2 points in a circuit)				
	Primary Points	Nos.	2		
	Secondary Points	Nos.	2		
	<b>PART(A) SUBTOTAL</b>				
	<b>GST@18%</b>				
	<b>PART(A) SUBTOTAL INCLUDING GST</b>				
<b>B.</b>	<b>CONDUITING FOR TELEPHONE, COMPUTER &amp; CONDUITING, WIRING FOR T.V. SYSTEM.</b>				
<b>1</b>	<b>TELEPHONE SYSTEM</b>				
	Supplying, laying, effecting terminations, testing and commissioning of 0.51mm dia Cu. Conductor, twisted, colour coded with polythene cap or barrier, telephone cables in the existing tray or in conduit including providing & fixing conduit pipe or cable trays as required from building tag block to the floor as required.	Nos.	2		
<b>2</b>	<b>COMPUTER NETWORKING</b>				
2.1	Wiring for computer networking from Jack Panel in data rack to computer workstation with Cat-6 computer cable in PVC conduit of size 20/25mm including providing ferrules at both ends and termination at both ends including providing & fixing frame for Cat-6 with shutter, RJ45 outlet, face plate and mounting box complete of modular type, This work includes supply and laying of CAT-6 cable in PVC conduits throughout the length, from the /OH to the point.	Nos.	11		
2.2	Supplying and fixing 9U (Rack with glass door, opening in the front power panel 1 (horizontal), cable manager 1 lock & key).	Nos.			
2.3					
2.4	Supplying and fixing Patch Cord - 2 Meter - (DBPS Mounting Cord)	Nos.	2		
2.5	Supplying and fixing Patch Cord - 1.5 Meter -	Nos.	8		
3	Supply and fixing of 1.6mm thick G.I. Box along with RG6T .V Coaxial socket with Cover Plate.	Nos.	1		
4	Supply, drawing, connecting, testing and commissioning of T.V Coaxial cable RG6 in existing conduit.	Nos.	1		
	<b>PART(B) SUBTOTAL</b>				
	<b>GST@18%</b>				
	<b>PART(B) SUBTOTAL INCLUDING GST</b>				
<b>C.</b>	<b>CABLES, MAINS &amp; SUB MAINS</b>				

1	Supplying all materials and laying/pulling 1100 volts grade PVC Insulated copper /aluminium conductor wires (FRLS) in MS conduit with all fixing accessories after cutting the floor, wall and the like etc. and plastering the floor level to original. Conduit must be 30mm below the floor finish level.				
i	4X10sq.mm. Aluminium armoured cable (Branch UPS DB)	RM	15		
ii	Supplying & laying in position 4x10 Sqmm Copper Cable	RM	20		
ii	Supplying & laying in position 2x2.5 Sqmm Copper wire for circuit	RM	75		
iii	Supplying, laying, testing & commissioning of 3.5Cx50sq.mm. at 1100 volts grade PVC Insulated aluminium conductor armoured cable with 10 gauge earth copper wire including cable end termination using appropriate Lugs, Glands, termination accessories, Clamp etc. as required as per specification. (Mains)	RM	3		
	<b>PART(C) SUBTOTAL</b>				
	<b>GST@18%</b>				
	<b>PART(C) SUBTOTAL INCLUDING GST</b>				
<b>D.</b>	<b>DISTRIBUTION BOARD</b>				
	Supplying, installing, testing & commissioning of surface/recessed mountings, Doubledoor 415 volts TPN MCB distribution board of steel, 1.6mm thick dust phosphatized and painted, inclusive of 100 amps, tinned copper busbars, earth bar, common neutral link, din bar for mounting of MCB's detachable gland/knockout plate & with built in loose wire box, and superior make terminal connectors for all incoming and outgoing circuits duly prewired with adequate size of PVC Insulated copper wires between the busbars and the MCB's as well as the incoming and up to the terminal connectors/neutral link and ready for installation of following ways as required.				
	Use 'B' curve MCB's for lighting & small power circuits, 'C' curve for motor duty i.e. for pumps, AC motors, window and split AC etc. & 'D' curve for UPS DB's i.e. for computers/PC's circuit. Main incoming & outgoing circuit MCB's shall be selected accordingly i.e. type B, C & D. Contractor to select the MCB's accordingly as per the nature of the circuit/load.				
	Each DB shall have separate neutral link of rating not less than 100A for each phase. The main incoming neutral link shall be in addition to three outgoing neutral links and shall be of 125A.				
	UPS DB's shall have a dedicated Earthing link fixed on insulated supports, which will be in addition to body earth link.				
	All internal interconnecting wiring within the DB's shall be PVC Insulated flexible copper conductor wires of adequate capacity as per the current rating.				
	Inside each DB, a DB chart is to be fixed.				
a	<b>4-way TPN DB (LIGHT &amp; Power DB)</b>	No.	1		
	<b>Incoming:-</b>				
	1 No. 63 Amp TPN (10KA) MCB				
	<b>Outgoing:-</b>				
	12 Nos. 6/32 Amp (10KA) SPMCB				
c	<b>4-way TPN DB (AC DB)</b>	No.	1		
	<b>Incoming:-</b>				
	1 No. 63 Amp TPN (10KA) MCB				
	<b>Outgoing:-</b>				

	5Nos.25Amp(10KA)SPMCB				
d	4-waySPNDBwith2Nos.63A(10KA)DPMCB(ForUPSInput)	No.	1		
	Doubledoorinclosure				
e	(2+8)-waySPNDB(ForUPSSubDB)DoubleDoorinclosure	No.	1		
	Incomer:-				
	1No.40AmpDP(10KA)MCB				
	Outgoing:-				
	6Nos.6/10/16/25Amp(10KA)SPMCB				
	<b>PART(D)SUBTOTAL</b>				
	<b>GST@18%</b>				
	<b>PART(D)SUBTOTALINCLUDINGGST</b>				
<b>E</b>	<b>(LIGHTFITTINGS&amp;ACCESSORIES)</b>				
	Supplying, installationwithhangingsupport,testingandcommissioningoffollowinglightfi xtureswithethelectronicBallasts,Tubes,lamps,allfixingmaterialsincluding connectingwiresetc. allcompleteasper thedirectionsofEngineer-in- charge(AIILEDLightFixtureshouldbecoveredwithminimum3Yearsonsiterepl acementwarranty)				
i	LED18Wtube4'-0"Asspecifiedintenderdocumentorapprovedby SBIIMS/Architect.	Nos.	1		
ii	FULLGLOW2X2LED36WslimSmartPanelofmakeAsspecifiedin tenderdocumentorapprovedbySBIIMS/Architect.	Nos.	22		
iii(a)	Supplying, fixing,testing andcommissioning of 15W LEDcommercial typedownlighterofmakeAsspecifiedintenderdocumentorapprovedby SBIIMS/Architect.	Nos.	21		
iv	LED9Wbulb" As specifiedintenderdocument or approved bySBIIMS/Architect.	Nos.	2		
v	Supply,installation,testingandcommissioningoffollowingfanswithallfixingma terialslikewhitePolycarbonate2mmHylemsheetcover,downrods, fanbox as required etc.all completeas per thedirectionsof Engineer-in-charge.				
a	Supply&fixingof230mmexhaustfan'VentilairDXW'withself- closinglouversandplasticbodywithallaccessoriesetc.completeofmakeAsspec ifiedintenderdocumentorapprovedbyconcernedofficeincharge.	Nos.	1		
b	Supply&fixingofceilingfanof1200mmdiamakeasspecifiedintenderdocument orapprovedbyconcernedofficeinchargeinclusiveofextened rod&fastnerifrequired	Nos.	11		
c	Supply&fixingofceilingfanof900mmdiamakeasspecifiedintende documentorapprovedbyconcernedofficeincharge.	Nos.	1		
	<b>PART(E)SUBTOTAL</b>				
	<b>GST@18%</b>				
	<b>PART(E)SUBTOTALINCLUDINGGST</b>				
<b>F.</b>	<b>EARTHINGSYSTEM</b>				

1	Supply, Installation, Testing and Commissioning of Maintenance Free Earthings system made up of copper bonded rod of 10 feet length, 17.2mm dia. (Minimum copper bonding shall be 0.25mm) along with Rod-to-Conductor connectors, Earthen enhancement material, Pit Cover and other accessories as required and as per specification and other applicable codes (include chamber for earthing, Earthing certificate to be submitted along with the bill).	Nos	1		
2	Providing and fixing of Copper/GI strips in surface or in recess for loop earthing etc. as required.				
i	Providing and fixing 2X8SWG dia. Cu earth wire in PVC conduit on surface or in recess for loop earthing along with the existing surface/recess cable as required.	RM	15		
<b>PART(F) SUBTOTAL</b>					
<b>GST@18%</b>					
<b>PART(F) SUBTOTAL INCLUDING GST</b>					
<b>G.</b>	<b>MAIN PANEL AND METER BOARD</b>				
	Designing, fabrication, supply, installation, testing and commissioning of front operated cubicle type compartmentalized, front access, freestanding on 75MM "MS channel, dust and vermin proof (IP42 degree protection) panels suitable for use at 415V, 3 phase, 4-wire 50Hz systems suitable for fault level of required values symmetrical at 415V fabricated from 2mm thick CRCAMSS sheets with hinged, gasketted (Metal based neoprene) lockable doors having structural reinforcement including 3mm thick glass and plates on top and bottom, lifting hooks, GI earth strip of required size with 2 no's earth terminals, 2 no's 230VAC operated 250mm X 250mm size axial fans for exhaust of heat with On-Off toggle switches including 2 coated primer and 2 power coated paint finish of approved shade over metal surface cleaned and treated with seven tank process completely with interconnection etc. as per specifications as required. Main panel board of approved make (Should be CPRI Approved, Type of Approval as instructed by the concerned office in charge) <b>panel size 2'-6" x 2'-6"</b>	No.	1		
	As per the following specifications, (Part IV- Substation) and IS: 8623 comprising of following panel mounting switch gear etc. as required, should be CPRI Approved. IS: 8623 comprising of following panel mounting switch gear etc. as required, should be CPRI Approved. Note: Type of CPRI testing shall be as per Architect/Bank's instructions. All switch gear shall have provision for entry of cables from the top or bottom through Cable Alley.				
	All live accessible parts shall be shrouded and all equipments shall be finger touch proof. The bus bars insulation shall be with heat shrinkable sleeves SMC/DMC shrouds and bus bars support shall be used. Pad locking facility shall be provided on all outgoing feeders' doors and switch handles shall be lockable in OFF position.				
	Suitable arrangements shall be made for termination of multiple incoming cables.				
	All IKA values indicated shall be ICS breaking capacity				
	GA drawing shall be got approved by concerned office in charge.				
a.	Floor panel shall consist of:-				
	<b>INCOMER</b>				
	1 No. 100Amps, TPMCCB (10KA)				
	<b>BUSBARS</b>				
	100amps TPN pole bus bar chamber of suitable length with copper bus bars. All bus bars and interconnections shall be of suitable size copper strips.	Set			

b.	<b>INDICATING PANEL</b>				
	Digital flushtype class-1.0 accuracy multifunction meters showing V, A, PF etc. with 3 Nos. Current Transformers of 125/5 A ratio, 15 V AC class-1.0 metering. - 1 sets				
	RYB Indicating lamps				
	<b>OUTGOINGS:-</b>				
	2 Nos 63 ATPN MCB (10kA) terminal suit table to receive cable on one side and wire connection to Busbars. (For Light/POWER DB & Spare)				
	1 Nos 40 ADP MCB (10kA) terminal suit table to receive cable on one side and wire connection to Busbars.				
	2 Nos 63 ATPN MCB (10kA) terminal suit table to receive cable on one side and wire connection to Busbars. (for AC and Spare)				
	The electrical panel as described above and specifications complete.	Set			
	<b>PART (G) SUBTOTAL</b>				
	<b>GST @ 18%</b>				
	<b>PART (G) SUBTOTAL INCLUDING GST</b>				
	<b>GROSS SUB TOTAL (PART A + PART B + PART C + PART D + PART E + PART F + PART G + PART H) INCLUDING GST</b>				
	<b>GRAND TOTAL AMOUNT</b>				

Total Without GST

Gst

Total cost

**PRICE BID (PART-III)**

**Name of work: Air condition work of Existing premises Of UCO BANK GRAM PIPLIYAHANA , TILAK NAGAR , Zonal Office Indore**

Note : For any make, if OEM doesn't has specific star rating for the product but that product has equivalent energy saving as compared to the star rating, then vendor shall mentioned the same against the model number.

Sr. No	Particulars	Product Model No.
1.	2.0 TR Wall mounted Split Unit 5 Star Inverter Model	5 Star Inverter
2.	1.5 TR Wall mounted Split Unit 5 Star Inverter Model	5 Star Inverter
3.	1 TR Wall mounted Split Unit 5 Star Inverter Model	5 Star Inverter

**AIR-CONDITIONING WORKS :**

Air-conditioning System ( 5 Star - Wall mounted Split Unit)

**Equipment Make –Daiken/Hitachi /Blue star- 5 star split energy saving inverter type**

- All the work of Drain pipe/copper pipe/cable shall be properly supported by clamps from the slab.
- The installation of the AC should be done by Authorized agency and certificate of same should be submitted . in warranty period AMC of AC should be part of Vendor and Bank is not liable to call the company.
- All jhiri work should be finished properly by cement plaster .
- All cable & drain pipe work should be measured in presence of architect before finishing / underground / covering of the work

Sr. No	SPLIT TYPE AIR CONDITIONERS				
--------	-----------------------------	--	--	--	--

<b>A.</b>	<b>PART -A</b>				
	<b>HIGH SIDE WORK</b>				
	<b>Description</b>	<b>Unit</b>	<b>Quantity</b>	<b>Rate</b>	<b>Amount</b>
<b>1</b>	Supplying, erection, testing and commissioning following wall mounted Split/ Roof mounted cassette units of /Daiken / Bluestar / Hitachi with cordless remote complete with all necessary fittings duly insulated with 9 mm thick nitrile rubber pipe insulation with (evaporator coil – copper only), fan and fan motor, machine control panel improved Refrigerant Joints, .Air conditioners shall be fitted with hermetically sealed type suction cooled reciprocating or discharge cooled rotary compressor or scroll compressor. Compressor unit operating on <b>R-22/ R-410</b> . All complete as per drawing, approval and instructions of the Employer (Rates to be inclusive of Copper refrigerant pipe with insulation , Drain pipe &labour cost up to 3 Mtr. Length ).				
<b>a</b>	1.0 TR wall mounted split unit (Minimum 5-Star rating inverter type) including all necessary fittings and mountings as specified by the manufacturer.	Nos.	1		
<b>b</b>	1.5 TR wall mounted split unit (Minimum 5-Star rating inverter type) including all necessary fittings and mountings as specified by the manufacturer.	Nos.	1		
<b>c</b>	2 TR wall mounted split unit (Minimum 5-Star rating inverter type) including all necessary fittings and mountings as specified by the manufacturer.				
	<b>PART A –HIGH SIDE WORK SUB TOTAL AMOUNT</b>				
	<b>GST @18%</b>				
	<b>Total</b>				

	<b>PART –B</b>				
	<b>LOW SIDE WORK</b>				
<b>1</b>	<b>EXTRA REFRIGERANT PIPING</b>				
	Supplying and laying of Extra copper refrigerant piping with nitrile rubber pipe insulation, both of size as specified by the manufacturer suitable for 1.0 TR/ 1.5/2.0 TR Split type AC (From Indoor to outdoor Units) Beyond 3 M. of Max flow Brand				
<b>a</b>	For 1.0 T Split unit	Mtr.	6		
<b>b</b>	For 1.5 T Split unit	Mtr.	18		
<b>c</b>	For 2.0 T Split Unit				

<b>2</b>	<b>DRAIN PIPING</b>				
	Providing and fixing drain piping up to drain as directed by the engineer in charge with all accessories e.g. elbows, unions, sockets, reducers, reducing tees, nipples etc. Complete job including cutting chiseling in walls, fixing with GI clamps, floor and making good of all chases/ cuts etc. and discharging the drain into a floor trap/ gully as per site conditions with insulation includes the repairing of the cutting part in the wall or floor , both as specified by the manufacturer.				
<b>a</b>	25 mm dia PVC drain pipe for Split AC	Mtr.	20		
<b>3</b>	<b>AUTOMATIC VOLTAGE CONTROLLER</b>				
	Providing and fixing Stabilizer with 3-4 step relay and input voltage range of 130-270 V and output to be 230-240 V (Blue bird/ Logic state/ Inline/ V-Gaurd/Equivalent Reputed Make) (copper winding).				
<b>a</b>	4 KVA (For 2.0 TR Split AC)	Nos.	1		
<b>b</b>	3 KVA (For 1.0/ 1.5 TR Split AC)	Nos.	1		
<b>4</b>	<b>AIR-CONDITIONERS STAND</b>				
	<b>Powder coated readymade stands</b>				
	For 1.5TR Hi Wall split units	Nos.	1		
	For 2.0 TR Hi Wall split units	Nos.	1		
<b>5</b>	<b>ELECTRICAL CABLES</b>				
	Suitable IS/BIS standard Cable of 1.1-2.2 KV, Multi strand, FRLS 2- 4 C / /2.5 – Sqmm 3 core ) as per design requirement of Peak load calculation of specific ACs system installed at site with 1"/1/2"/2" PVC conduit pipe between indoor/outdoor unit				
<b>a</b>	Supplying and laying of Extra Electrical interconnecting control cable from indoor to outdoor of size as specified by the manufacturer suitable for 1.0 TR/ 1.5/2.0 TR Split type AC. 2.5 Sqmm x 4 core of finolex Mac	Mtr.	24		
<b>6</b>	<b>SHIFTNG OF AC</b>				
<b>a</b>	Removal existing AC from existing branch & Refitting in Existing premises ( Distance up to 3M ) inclusive of material if required	Nos.	1		



7	CORE CUTTING				
a	Core cutting member in Non RCC	Mtr.			
b	In RCC member	No.	2		
	PART B –LOW SIDE WORK SUB TOTAL AMOUNT				
	GST @18%				
	PART B –LOW SIDE WORK SUB TOTAL AMOUNT				
	GRAND TOTAL (PART A + PART B) INCLUDING GST				
	Say				
Note: The rates quoted includes all other taxes, duties, loading, unloading , transportation, other expenses etc. to site, only GST will be paid Extra					

**Amount in words:**

Total without GST =

GST =

Total With GST =

**Signature of company representative**

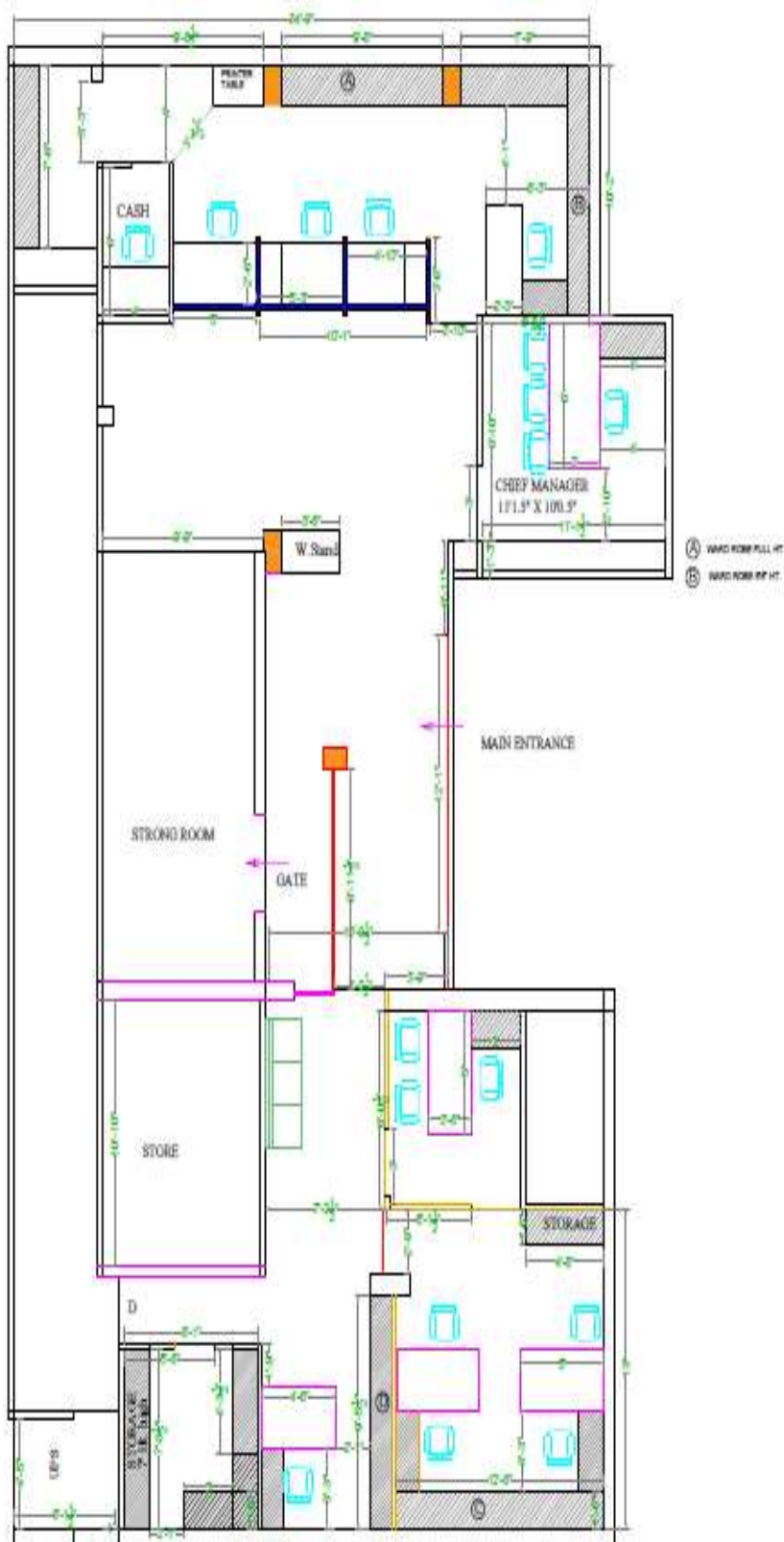
**Seal of company/agency**

**Date**

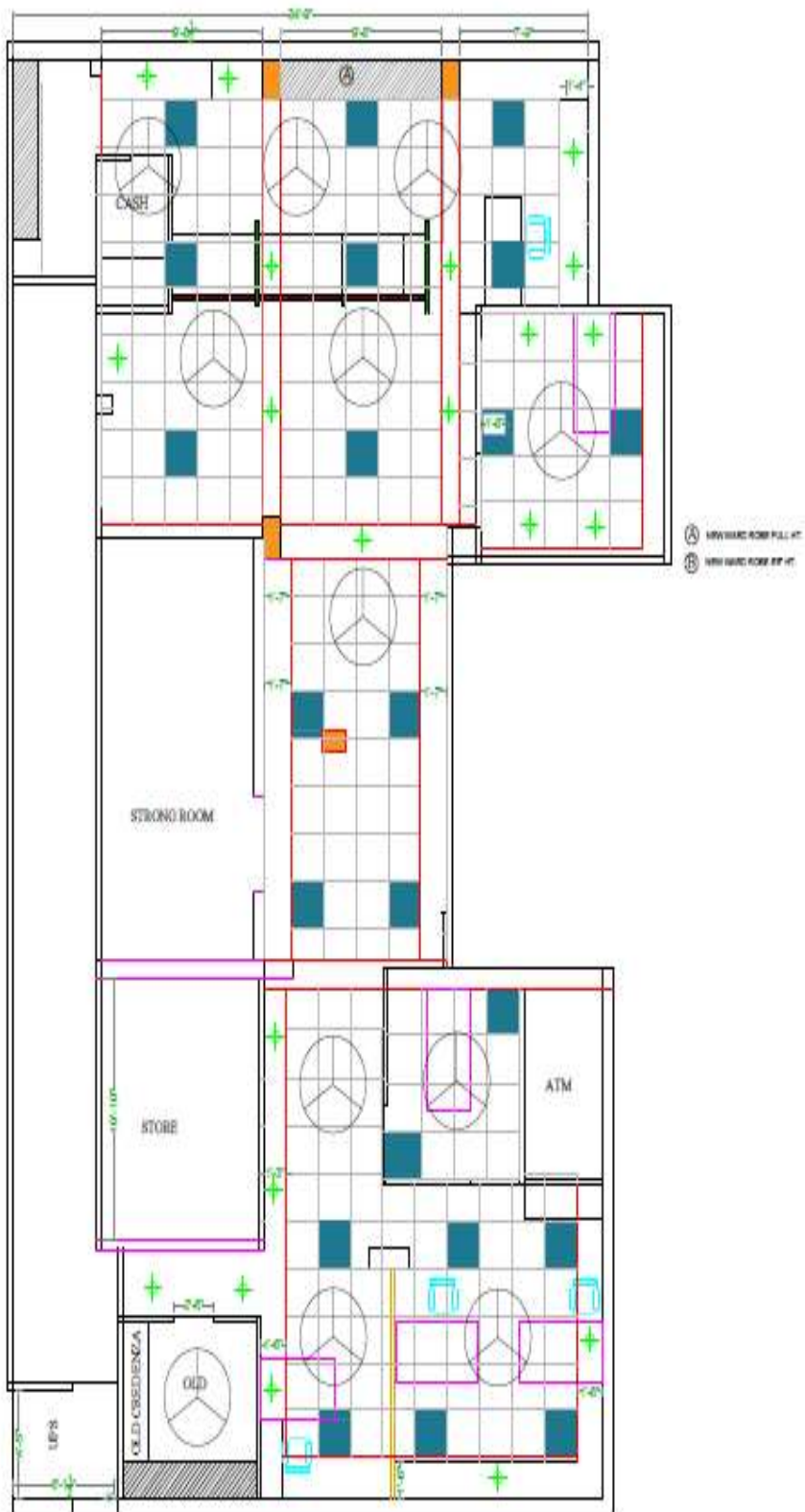
Summary of project

- 1) Cost Of Interior furnishing work =
- 2) Cost of electrification work =
- 3) Cost of Air condition work =

Total Cost of Project Excluding GST = Rs.



MAIN PLAN





AC LAYOUT